



 **Primary 3 - Term 4 (SA2) Science (School S)**  Duplicate Print Delete Assign Test**Test Introduction**[+ Add Introduction](#)**50 Questions** (59 Points)Question Bank: 19,439 Questions 

Test Questions

1 Test Assignment

Question 1

Primary 3 Science » Primary 3 Science (Term 4)

2 pts

Which one of the following statements is not true about living things?

- A) Living things reproduce
- ✓ B) Living things do not die
- C) Living things respond to changes around them
- D) Living things need food air and water to survive

Question Type: Multiple Choice
Randomize Answers: No
Date Added: Tue 4th Aug 2020
Last Modified: N/A
QID#: 22,826,149

[Answers](#) | [Edit](#) | [Duplicate](#) | [Used In](#) | [Reorder](#)[Remove From Test](#)**Question 2**

Primary 3 Science » Primary 3 Science (Term 4)

2 pts

Study the table below.

Properties	X	Y
Able to make food	No	Yes
Able to grow	Yes	Yes
Can reproduce	Yes	Yes
Need air, food and water	Yes	Yes

What can X and Y be respectively?

	X	Y
1)	Hamster	Rose Plant
2)	Rabbit	Table
3)	Toy Car	Fish
4)	Sunflower Plant	Bird's Nest Fern

- ✓ A) 1
B) 2
C) 3
D) 4

Question Type: Multiple Choice
Randomize Answers: No
Date Added: Tue 4th Aug 2020
Last Modified: N/A
QID#: 22,826,154

[Answers](#) | [Edit](#) | [Duplicate](#) | [Used In](#) | [Reorder](#)

[Remove From Test](#)

Question 3

Primary 3 Science » Primary 3 Science (Term 4)

2 pts

Which of the following pairs of animals have the same type of body covering?

- A) Sparrow and Crab
B) Tiger and Turtle
C) Squirrel and Snail
✓ D) Fish and Snake

Question Type: Multiple Choice
Randomize Answers: No
Date Added: Tue 4th Aug 2020
Last Modified: N/A
QID#: 22,826,169

[Answers](#) | [Edit](#) | [Duplicate](#) | [Used In](#) | [Reorder](#)

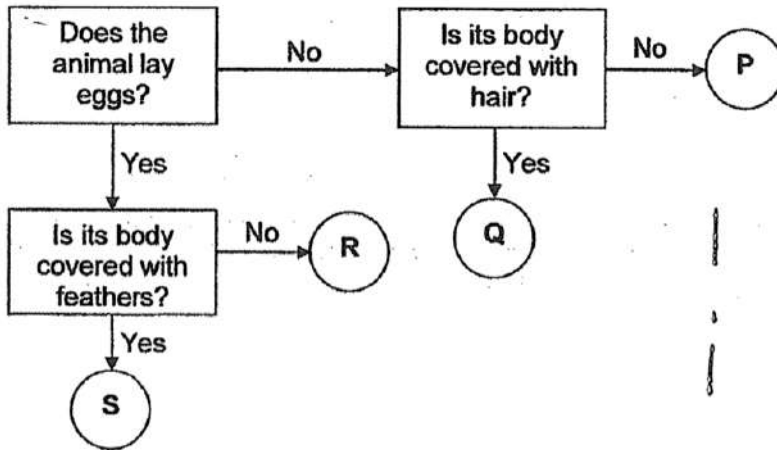
[Remove From Test](#)

Question 4

Primary 3 Science » Primary 3 Science (Term 4)

2 pts

Study the flowchart below.



Which animal is a lizard?

- A) P
- B) Q
- ✓ C) R
- D) S

Question Type: Multiple Choice
Randomize Answers: No
Date Added: Tue 4th Aug 2020
Last Modified: N/A
QID#: 22,826,177

[Answers](#) | [Edit](#) | [Duplicate](#) | [Used In](#) | [Reorder](#)

[Remove From Test](#)

Question 5

Primary 3 Science » Primary 3 Science (Term 4)

2 pts

Mrs Lee added something to enable milk to turn into yoghurt. What could she have added?

- A) mould
- B) fern spores
- C) mushrooms
- ✓ D) bacteria

Question Type: Multiple Choice
Randomize Answers: No
Date Added: Tue 4th Aug 2020
Last Modified: N/A
QID#: 22,826,191

[Answers](#) | [Edit](#) | [Duplicate](#) | [Used In](#) | [Reorder](#)

[Remove From Test](#)

Question 6

Primary 3 Science » Primary 3 Science (Term 4)

2 pts

Daniel conducted an experiment using three similar pieces of bread. He placed them on separate clean plates and left them on the kitchen table.



Fresh bread



Moist bread



Toasted bread

After 2 weeks, Daniel observed mould growing only on the fresh bread and moist bread. What is the most likely reason for his observation?

- ✓ A) Mould cannot grow without water
- B) Mould cannot grow without light
- C) Mould can only grow with air
- D) Mould can only grow after being put in the oven

Question Type: Multiple Choice
 Randomize Answers: No
 Date Added: Tue 4th Aug 2020
 Last Modified: N/A
 QID#: 22,826,276

[Answers](#) |
 [Edit](#) |
 [Duplicate](#) |
 [Used In](#) |
 [Reorder](#)

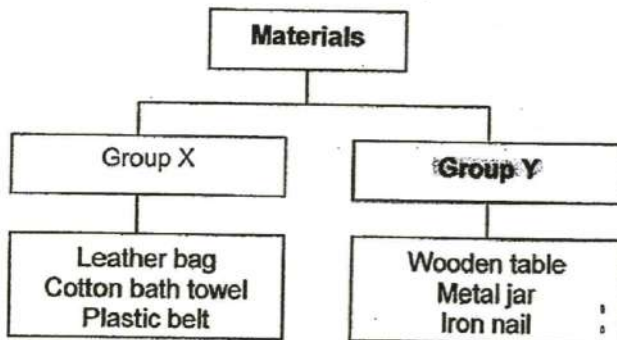
[Remove From Test](#)

Question 7

Primary 3 Science » Primary 3 Science (Term 4)

2 pts

The classification table below shows some materials that have been placed into Groups X and Y.



Which of the following headings best describe the objects classified above?

	Group X	Group Y
1)	Hard	Soft
2)	Flexible	Non-flexible
3)	Non-breakable	Breakable
4)	Made from natural materials	Made from man-made materials

- A) 1
- ✓ B) 2

C) 3

D) 4

Question Type: Multiple Choice
Randomize Answers: No
Date Added: Tue 4th Aug 2020
Last Modified: N/A
QID#: 22,826,289

[Answers](#) | [Edit](#) | [Duplicate](#) | [Used In](#) | [Reorder](#)

[Remove From Test](#)

Question 8

Primary 3 Science » Primary 3 Science (Term 4)

2 pts

Tom wants to investigate which material is most suitable to make a fish tank for a young child.

Material	Characteristics		
	Waterproof	Transparent	Breaks easily
W	Yes	No	Yes
X	No	Yes	Yes
Y	Yes	Yes	No
Z	No	No	Yes

Which material is the **most suitable** material to make the fish tank?

A) W

B) X

✓ C) Y

D) Z

Question Type: Multiple Choice
Randomize Answers: No
Date Added: Tue 4th Aug 2020
Last Modified: N/A
QID#: 22,826,294

[Answers](#) | [Edit](#) | [Duplicate](#) | [Used In](#) | [Reorder](#)

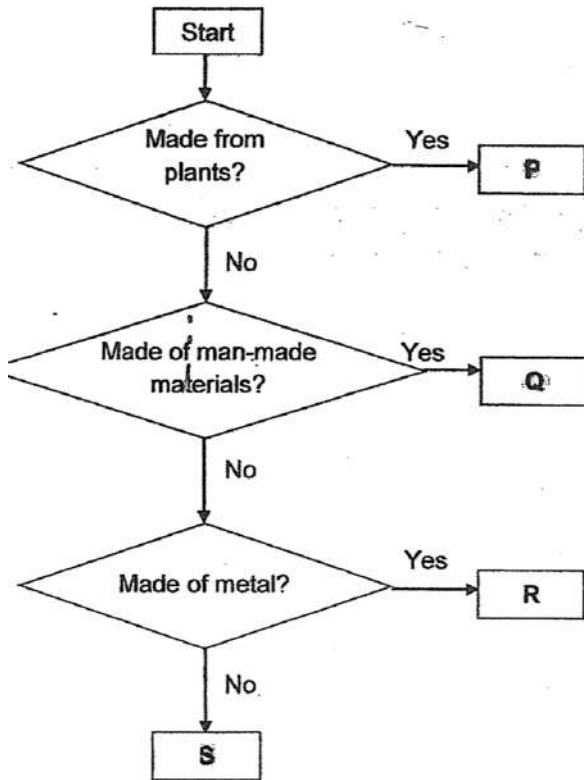
[Remove From Test](#)

Question 9

Primary 3 Science » Primary 3 Science (Term 4)

2 pts

Study the flowchart below.



What objects are P, Q, R and S likely to be?

	P	Q	R	S
1)	paper	soil	needle	shirt
2)	key	plastic bag	leather	soil
3)	shirt	metal spoon	toothpick	nail
4)	toilet roll	plastic pail	nail	leather

- A) 1
 B) 2
 C) 3
 ✓ D) 4

Question Type: Multiple Choice
 Randomize Answers: No
 Date Added: Tue 4th Aug 2020
 Last Modified: N/A
 QID#: 22,826,308

[Answers](#) | [Edit](#) | [Duplicate](#) | [Used In](#) | [Reorder](#)

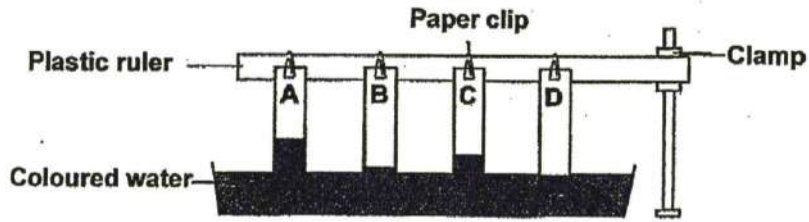
[Remove From Test](#)

Question 10

Primary 3 Science » Primary 3 Science (Term 4)

2 pts

Sheila wanted to investigate which brand of bath towel can absorb the most water. She carried out an experiment to find out the amount of water absorbed by different materials. The results are shown in the diagram below.



Which brand of towel should she buy if she wants a brand of towel that can absorb the most amount of water?

- ✓ A) Brand A
- B) Brand B
- C) Brand C
- D) Brand D

Question Type: Multiple Choice
 Randomize Answers: No
 Date Added: Tue 4th Aug 2020
 Last Modified: N/A
 QID#: 22,826,325

[Answers](#) | [Edit](#) | [Duplicate](#) | [Used In](#) | [Reorder](#)

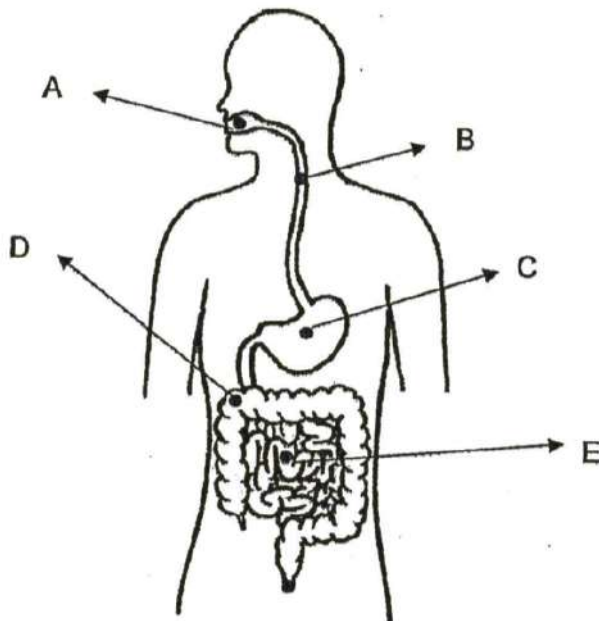
[Remove From Test](#)

Question 11

Primary 3 Science » Primary 3 Science (Term 4)

2 pts

In which part of the digestive system are digestive juices produced?



- A) A and D only
- ✓ B) A, C and E only

- C) B, D and E only
- D) A, B, C, D and E

Question Type: Multiple Choice
Randomize Answers: No
Date Added: Tue 4th Aug 2020
Last Modified: N/A
QID#: 22,826,335

[Answers](#) | [Edit](#) | [Duplicate](#) | [Used In](#) | [Reorder](#)

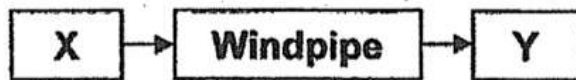
[Remove From Test](#)

Question 12

Primary 3 Science » Primary 3 Science (Term 4)

2 pts

The diagram below shows parts of an organ system.



What are organs X and Y respectively?

- A) mouth and lungs
- B) mouth and heart
- ✓ C) nose and lungs
- D) nose and heart

Question Type: Multiple Choice
Randomize Answers: No
Date Added: Tue 4th Aug 2020
Last Modified: N/A
QID#: 22,826,345

[Answers](#) | [Edit](#) | [Duplicate](#) | [Used In](#) | [Reorder](#)

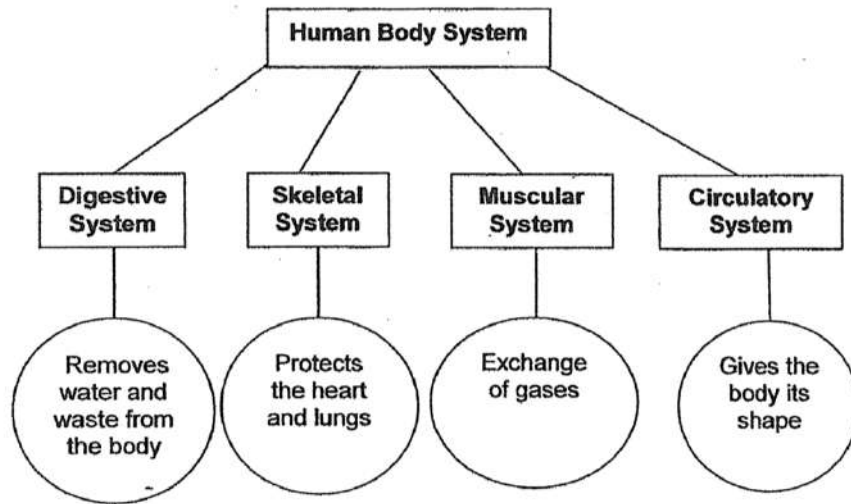
[Remove From Test](#)

Question 13

Primary 3 Science » Primary 3 Science (Term 4)

2 pts

Look at the chart below.



Which

body system has been correctly matched to one of its function?

- ✓ A) Digestive system and skeletal system only
- B) Digestive system and circulatory system only
- C) Skeletal system and muscular system only
- D) Digestive system, muscular system and circulatory system only

Question Type: Multiple Choice
Randomize Answers: No
Date Added: Tue 4th Aug 2020
Last Modified: N/A
QID#: 22,826,367

[Answers](#) | [Edit](#) | [Duplicate](#) | [Used In](#) | [Reorder](#)

[Remove From Test](#)

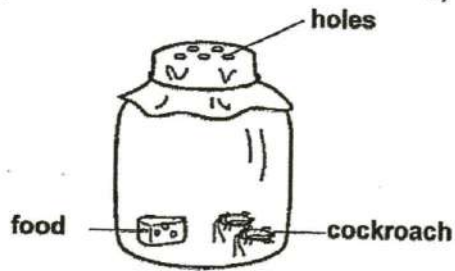
Question 14

Primary 3 Science » Primary 3 Science (Term 4)

2 pts

Alisha placed the four set-ups as shown below in a dark room.

1)



Set - up A

3)



Set - up C

2)



Set - up B

4)



Set - up D

In which set-up, A, B, C or D will the cockroaches die in the shortest time?

- A) Set-up A
- B) Set-up B
- ✓ C) Set-up C
- D) Set-up D

Question Type: Multiple Choice
 Randomize Answers: No
 Date Added: Tue 4th Aug 2020
 Last Modified: N/A
 QID#: 22,826,387

[Answers](#) | [Edit](#) | [Duplicate](#) | [Used In](#) | [Reorder](#)

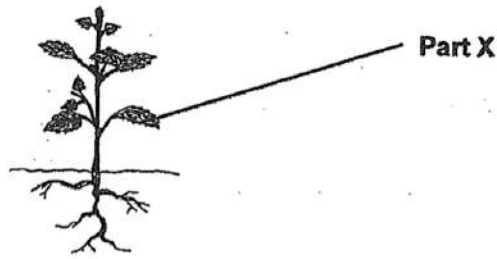
[Remove From Test](#)

Question 15

Primary 3 Science » Primary 3 Science (Term 4)

2 pts

The diagram below shows a plant.



Based on the picture above, identify Part X and its function.

	Part X	Function
1)	Roots	Absorbs water
2)	Flower	Absorbs mineral salts
3)	Stem	Keeps the plant upright
4)	Leaf	Makes food

- A) 1
 B) 2
 C) 3
 ✓ D) 4

Question Type: Multiple Choice
 Randomize Answers: No
 Date Added: Tue 4th Aug 2020
 Last Modified: N/A
 QID#: 22,826,394

[Answers](#) |
 [Edit](#) |
 [Duplicate](#) |
 [Used In](#) |
 [Reorder](#)

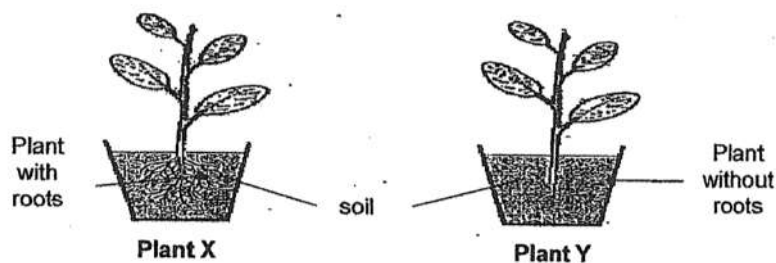
[Remove From Test](#)

Question 16

Primary 3 Science » Primary 3 Science (Term 4)

2 pts

Alice has 2 similar pots of plants. For Plant Y, she removed all the roots from the plant and placed it back into the soil.



When a strong gust of wind blew at the 2 pots, she noticed that Plant Y fell out of its pot but Plant X did not.

Based on her observation only, what can she conclude about the function of roots?

- A) The roots store food in the soil X
 B) The roots hold the plant firmly to the soil



- C) The roots absorb water and mineral salts from the soil
- D) The roots transport food and water to all parts of the plant

Question Type: Multiple Choice
Randomize Answers: No
Date Added: Tue 4th Aug 2020
Last Modified: N/A
QID#: 22,826,411

[Answers](#) | [Edit](#) | [Duplicate](#) | [Used In](#) | [Reorder](#)

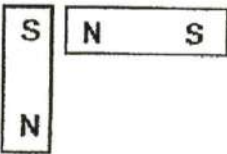
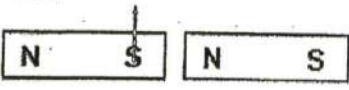

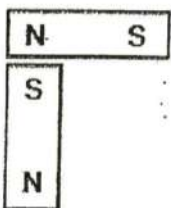
[Remove From Test](#)

Question 17

Primary 3 Science » Primary 3 Science (Term 4)

2 pts

Sarah placed 2 magnets together to see if they would repel. Which of the following would the two magnets repel each other?

- 1) 
- 2) 
- 3) 
- 4) 

- A) 1
- B) 2
- C) 3
- D) 4

Question Type: Multiple Choice
Randomize Answers: No
Date Added: Tue 4th Aug 2020
Last Modified: N/A
QID#: 22,826,421

[Answers](#) | [Edit](#) | [Duplicate](#) | [Used In](#) | [Reorder](#)

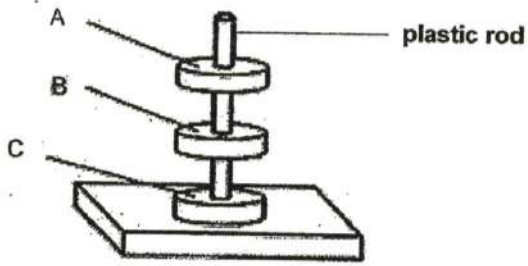
[Remove From Test](#)

Question 18

Primary 3 Science » Primary 3 Science (Term 4)

2 pts

The diagram below shows three rings A, B and C when they are passed through a plastic rod.



What can A, B and C be?

	A	B	C
1)	copper ring	plastic ring	ring magnet
2)	plastic ring	ring magnet	copper ring
3)	silver ring	ring magnet	ring magnet
4)	ring magnet	ring magnet	ring magnet

- A) 1
 B) 2
 C) 3
 ✓ D) 4

Question Type: Multiple Choice
Randomize Answers: No
Date Added: Tue 4th Aug 2020
Last Modified: N/A
QID#: 22,826,568

[Answers](#) | [Edit](#) | [Duplicate](#) | [Used In](#) | [Reorder](#)

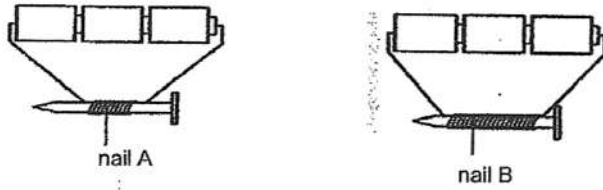
[Remove From Test](#)

Question 19

Primary 3 Science » Primary 3 Science (Term 4)

2 pts

Johnny conducted an experiment to make nails A and B into electromagnets as shown below using similar batteries and wires.



He placed the iron nails near some steel clips and recorded the number of clips attracted.

Nail	Number of turns of wire	Number of steel clips attracted
A	10	5
B	20	0

Johnny remembered reading from his Science notes that the greater the number of turns of wire, the stronger will be the nail. Thus, he expected nail B to be able to pick up more steel clips but instead it attracted none.

The likely reason for the result of his experiment would be _____.

- ✓ A) nail A is made of steel and nail B is made of copper
- B) nail A is made of copper and nail B is made of steel
- C) nail A is made of steel but nail B is made of iron
- D) both the nails are made of steel

Question Type: Multiple Choice
 Randomize Answers: No
 Date Added: Tue 4th Aug 2020
 Last Modified: N/A
 QID#: 22,826,589

[Answers](#) | [Edit](#) | [Duplicate](#) | [Used In](#) | [Reorder](#)

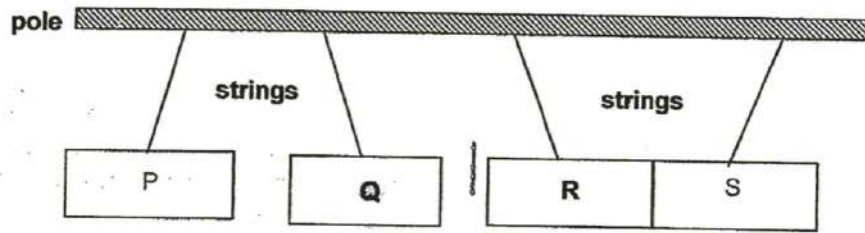
[Remove From Test](#)

Question 20

Primary 3 Science » Primary 3 Science (Term 4)

2 pts

Four metal bars, P, Q, R and S of the same size, were tied to a pole using strings as shown below.



Based on the table below, which of the following observations are correct about the metal bars?

Object	Made of non-magnetic material	Made of magnetic material	Is a magnet
P		√	√
Q		√	√
R	√		
S	√		

- A) P only
- B) R only
- C) R and S only
- ✓ D) P and Q only

Question Type: Multiple Choice
Randomize Answers: No
Date Added: Tue 4th Aug 2020
Last Modified: N/A
QID#: 22,826,596

[Answers](#) | [Edit](#) | [Duplicate](#) | [Used In](#) | [Reorder](#)

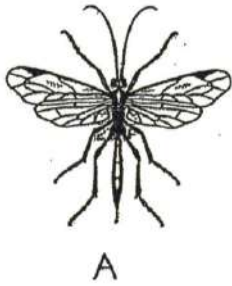
[Remove From Test](#)

Question 21

Primary 3 Science » Primary 3 Science (Term 4)

0 pts

21. The pictures below show 2 animals.



- a) Based on what you can see only, list 1 similarity and 1 difference between them. (Do not mention their colour, size and shape)
[2]

Similarity:

Question Type: Essay
Date Added: Tue 4th Aug 2020
Last Modified: N/A
QID#: 22,827,571

Correctly answered feedback

Similarity: Both A and B has six legs.

Incorrectly answered feedback

Similarity: Both A and B has six legs.

[Answers](#) | [Edit](#) | [Duplicate](#) | [Used In](#) | [Reorder](#)

[Remove From Test](#)

Question 22

Primary 3 Science » Primary 3 Science (Term 4)

0 pts

Difference:

Question Type: Essay
Date Added: Tue 4th Aug 2020
Last Modified: N/A
QID#: 22,827,574

Correctly answered feedback

Difference: A have wings but B does not have.

Incorrectly answered feedback

Difference: A have wings but B does not have.

Answers | Edit | Duplicate | Used In | Reorder

Remove From Test

Question 23

Primary 3 Science » Primary 3 Science (Term 4)

1 pt

Which group of animals do both the animals belong to?

Accepted answers:

- ✓ insect
- ✓ insect group

Question Type: Free Text
 Date Added: Tue 4th Aug 2020
 Last Modified: N/A
 QID#: 22,827,590

Answers | Edit | Duplicate | Used In | Reorder

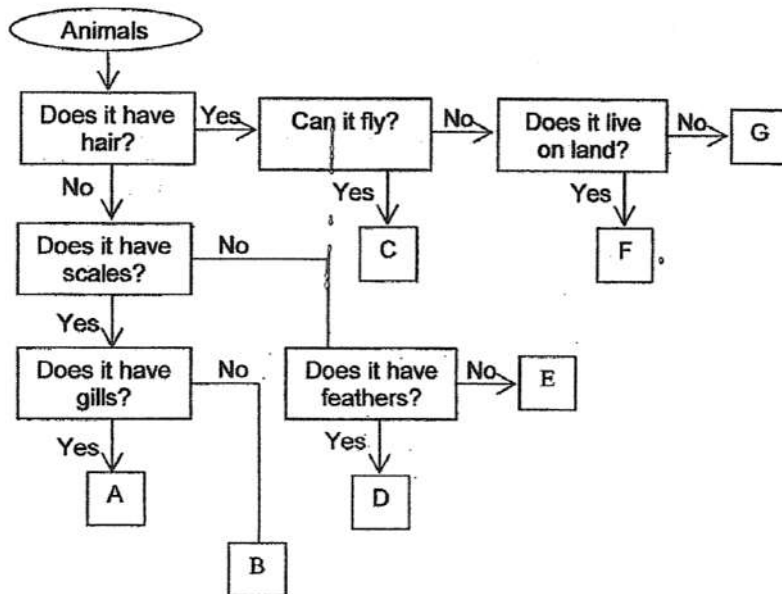
Remove From Test

Question 24

Primary 3 Science » Primary 3 Science (Term 4)

1 pt

Mary observed 7 animals A, B, C, D, E, F and G and drew a flowchart to describe the animals as shown below.



a) From the flowchart, which animal(s) is/are mammals? [1]

- A) A
- B) B
- ✓ C) C

- D) D
- E) E
- ✓ F) F
- ✓ G) G

Question Type: Multiple Response
Randomize Answers: No
Grade style: Full points if all answers are correct
Date Added: Tue 4th Aug 2020
Last Modified: N/A
QID#: 22,827,603

[↗ Answers](#) | [✎ Edit](#) | [📄 Duplicate](#) | [📌 Used In](#) | [⬇ Reorder](#)

[Remove From Test](#)

Question 25

Primary 3 Science » Primary 3 Science (Term 4)

1 pt

From the flowchart, which animal (s) is/are fish?

- ✓ A) A
- B) B
- C) C
- D) D
- E) E
- F) F
- G) G

Question Type: Multiple Choice
Randomize Answers: No
Date Added: Tue 4th Aug 2020
Last Modified: N/A
QID#: 22,827,610

[↗ Answers](#) | [✎ Edit](#) | [📄 Duplicate](#) | [📌 Used In](#) | [⬇ Reorder](#)

[Remove From Test](#)

Question 26

Primary 3 Science » Primary 3 Science (Term 4)

1 pt

Suggest which of the animals in the above classification diagram represents a crocodile?

- A) A
- ✓ B) B
- C) C
- D) D
- E) E
- F) F
- G) G

Question Type: Multiple Choice

Randomize Answers: No
 Date Added: Tue 4th Aug 2020
 Last Modified: N/A
 QID#: 22,827,618

[Answers](#) | [Edit](#) | [Duplicate](#) | [Used In](#) | [Reorder](#)

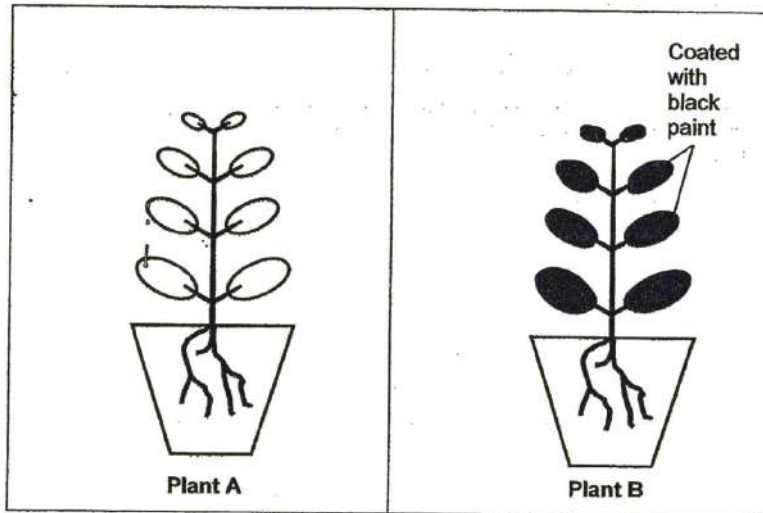
[Remove From Test](#)

Question 27

Primary 3 Science » Primary 3 Science (Term 4)

1 pt

23. Olivia set up an experiment with 2 potted plants as shown below. She covered the leaves of Plant B with black paint. Both plants were given the same amount of water daily.



- a) What do you think will happen to both the plants after 1 week? [1]

- ✓ A) Leave on Plant A will grow bigger.
 B) Plant A will die but plant B will grow

Question Type: Multiple Choice
 Randomize Answers: No
 Date Added: Tue 4th Aug 2020
 Last Modified: N/A
 QID#: 22,827,625

[Answers](#) | [Edit](#) | [Duplicate](#) | [Used In](#) | [Reorder](#)

[Remove From Test](#)

Question 28

Primary 3 Science » Primary 3 Science (Term 4)

0 pts

- b) Based on the diagrams above, what can Plant A do that Plant B cannot do? [1]

Question Type: Essay
 Date Added: Tue 4th Aug 2020
 Last Modified: N/A
 QID#: 22,827,636

Correctly answered feedback

Plant A can make its own food but plant B cannot.

Incorrectly answered feedback

Plant A can make its own food but plant B cannot.

Answers | Edit | Duplicate | Used In | Reorder

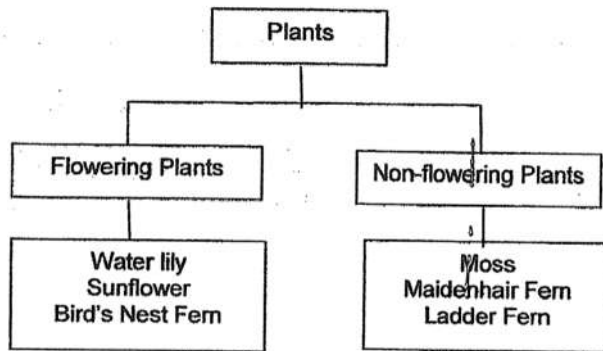
Remove From Test

Question 29

Primary 3 Science » Primary 3 Science (Term 4)

1 pt

24. Shi Lee drew a classification chart as shown below.



a) Which one of the living things above has been classified wrongly? [1]

Accepted answers:

✓ Bird's Nest Fern

Question Type: Free Text
 Date Added: Tue 4th Aug 2020
 Last Modified: N/A
 QID#: 22,827,643

Answers | Edit | Duplicate | Used In | Reorder

Remove From Test

Question 30

Primary 3 Science » Primary 3 Science (Term 4)

0 pts

b) Explain how the living thing you have stated in (a) reproduces. [1]

Question Type: Essay
 Date Added: Tue 4th Aug 2020
 Last Modified: N/A
 QID#: 22,827,655

Correctly answered feedback

Bird's Nest Fern reproduce by spores.

Incorrectly answered feedback

Bird's Nest Fern reproduce by spores.

Answers | Edit | Duplicate | Used In | Reorder

Remove From Test

Question 31

Primary 3 Science » Primary 3 Science (Term 4)

1 pt

Pamela had 4 identical pieces of leather that she cut out from an old sofa. She added 5 drops of water onto each piece of leather. Then, she left each piece of the leather under different conditions. Two weeks later, she noticed patches of black and green spots growing on the leather.

Conditions	Number of black and green patches on the leather
Bright and dry	1
Bright and moist	10
Shady and dry	2
Shady and moist	15

a) What are the black and green patches likely to be? [1]

Accepted answers:

✓ Mould

Question Type: Free Text
 Date Added: Tue 4th Aug 2020
 Last Modified: N/A
 QID#: 22,827,665

[Answers](#) | [Edit](#) | [Duplicate](#) | [Used In](#) | [Reorder](#)[Remove From Test](#)

Question 32

Primary 3 Science » Primary 3 Science (Term 4)

0.5 pts

Based on the information above, put a tick (✓) in the correct column below to show whether each statement made by Pamela about the black and green patches is true or false. [2]

can grow on leather objects

They

- ✓ A) True
B) False

Question Type: True False
Date Added: Tue 4th Aug 2020
Last Modified: N/A
QID#: 22,827,674

[Answers](#) | [Edit](#) | [Duplicate](#) | [Used In](#) | [Reorder](#)[Remove From Test](#)

Question 33

Primary 3 Science » Primary 3 Science (Term 4)

0.5 pts

They only need air to grow well

- A) True
✓ B) False

Question Type: True False
Date Added: Tue 4th Aug 2020
Last Modified: N/A
QID#: 22,827,677

[Answers](#) | [Edit](#) | [Duplicate](#) | [Used In](#) | [Reorder](#)[Remove From Test](#)

Question 34

Primary 3 Science » Primary 3 Science (Term 4)

0.5 pts

They grow very well in shady and moist conditions.

- ✓ A) True
B) False

Question Type: True False
Date Added: Tue 4th Aug 2020
Last Modified: N/A
QID#: 22,827,681

[Answers](#) | [Edit](#) | [Duplicate](#) | [Used In](#) | [Reorder](#)[Remove From Test](#)

Question 35

Primary 3 Science » Primary 3 Science (Term 4)

0.5 pts

They do not grow well in dry conditions.

- ✓ A) True
B) False

Question Type: True False
Date Added: Tue 4th Aug 2020
Last Modified: N/A
QID#: 22,827,689

Answers | Edit | Duplicate | Used In | Reorder

Remove From Test

Question 36

Primary 3 Science » Primary 3 Science (Term 4)

0 pts

i. The table below shows the properties of 4 different materials

Properties	A	B	C	D
Flexible	No	Yes	Yes	Yes
Strength	Strong	Weak	Strong	Strong
Transparent	Yes	No	Yes	No

a) Based on the table, describe material D.

[1]

Question Type: Essay
Date Added: Tue 4th Aug 2020
Last Modified: N/A
QID#: 22,827,705

Correctly answered feedback

Material D is flexible, strong and not transparent.

Incorrectly answered feedback

Material D is flexible, strong and not transparent.

Answers | Edit | Duplicate | Used In | Reorder

Remove From Test

Question 37

Primary 3 Science » Primary 3 Science (Term 4)

0 pts

b) Based on the table, state the difference(s) between materials B and C. [1]

Question Type: Essay
 Date Added: Tue 4th Aug 2020
 Last Modified: N/A
 QID#: 22,827,716

Correctly answered feedback

Material B is weak and not transparent but Material C is strong and transparent.

Incorrectly answered feedback

Material B is weak and not transparent but Material C is strong and transparent.

[Answers](#) | [Edit](#) | [Duplicate](#) | [Used In](#) | [Reorder](#)

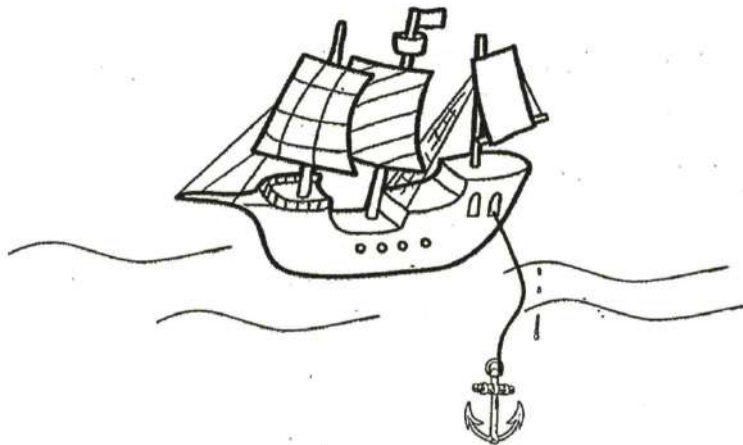
[Remove From Test](#)

Question 38

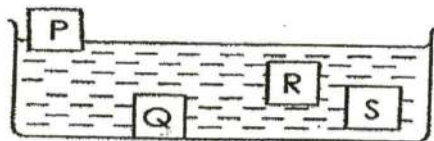
Primary 3 Science » Primary 3 Science (Term 4)

0 pts

Katriel wants to build a simple boat. She conducted an experiment to find out which is the most suitable material she could use to build a boat and the anchor.



She sets up an experiment as shown below.



Based on the experiment shown above, which property of materials is being tested in this experiment?

[1]

Question Type: Essay
 Date Added: Tue 4th Aug 2020
 Last Modified: N/A
 QID#: 22,827,759

Correctly answered feedback

If it sinks or floats.

Incorrectly answered feedback

If it sinks or floats.

Answers | Edit | Duplicate | Used In | Reorder

Remove From Test

Question 39

Primary 3 Science » Primary 3 Science (Term 4)

0 pts

Based on the experiment conducted, which material P, Q, R or S is most suitable to be used to build the boat? Explain your choice. [1]

Question Type: Essay
 Date Added: Tue 4th Aug 2020
 Last Modified: N/A
 QID#: 22,827,773

Correctly answered feedback

Material P as boats need to float on water.

Incorrectly answered feedback

Material P as boats need to float on water.

Answers | Edit | Duplicate | Used In | Reorder

Remove From Test

Question 40

Primary 3 Science » Primary 3 Science (Term 4)

1 pt

The anchor helps to prevent the boat from drifting off by gripping the sea bed in the sea. Which material P, Q, R or S is suitable to make the anchor? [1]

- A) P
 ✓ B) Q

- C) R
- D) S

Question Type: Multiple Choice
Randomize Answers: No
Date Added: Tue 4th Aug 2020
Last Modified: N/A
QID#: 22,827,782

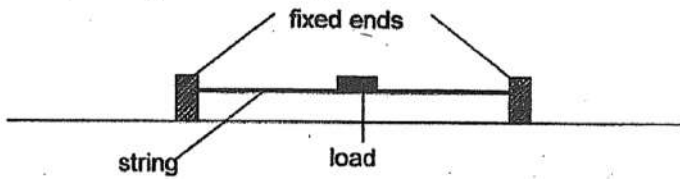
Answers | Edit | Duplicate | Used In | Reorder Remove From Test

Question 41

Primary 3 Science » Primary 3 Science (Term 4)

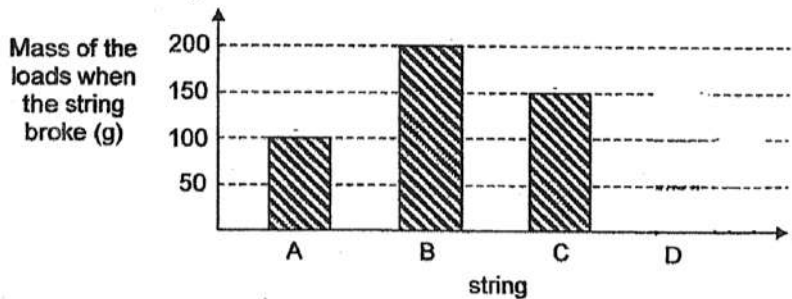
0 pts

Alysa used the set-up below to study a material.



In her study, she used four strings, A, B, C and D, and some 10 g loads. She added the 10 g loads to the string one at a time until each string broke.

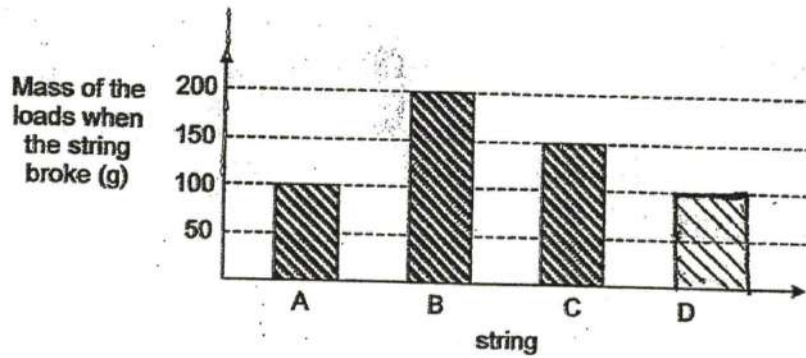
The following graph shows the mass of the loads that can be placed on each string until it broke.



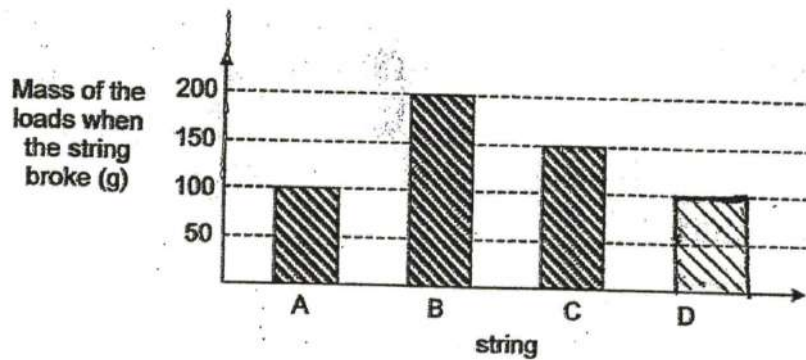
(a) Alysa tested another string, D. String D was able to carry a load up to 100g when it broke. Draw a bar for string D in the graph above. [1]

Question Type: Essay
Date Added: Tue 4th Aug 2020
Last Modified: N/A
QID#: 22,827,797

Correctly answered feedback



Incorrectly answered feedback



[Answers](#) |
 [Edit](#) |
 [Duplicate](#) |
 [Used In](#) |
 [Reorder](#)

[Remove From Test](#)

Question 42

Primary 3 Science » Primary 3 Science (Term 4)

1 pt

Based on the graph above, which string, A, B or C is the strongest? [1]

- A) A
 B) B
 C) C

Question Type: Multiple Choice
Randomize Answers: No
Date Added: Tue 4th Aug 2020
Last Modified: N/A
QID#: 22,827,810

[Answers](#) |
 [Edit](#) |
 [Duplicate](#) |
 [Used In](#) |
 [Reorder](#)

[Remove From Test](#)

Question 43

Primary 3 Science » Primary 3 Science (Term 4)

0 pts

Explain your answer.

Question Type: Essay
Date Added: Tue 4th Aug 2020

Last Modified: N/A
 QID#: 22,827,838

Correctly answered feedback

It can hold the most number of 10g loads.

Incorrectly answered feedback

It can hold the most number of 10g loads.

Answers | Edit | Duplicate | Used In | Reorder

Remove From Test

Question 44

Primary 3 Science » Primary 3 Science (Term 4)

2 pts

Visa dropped a bar magnet into a box of paper clips. When she picked up the magnet, paper clips were attracted to different parts of the magnet. She counted the paper clips and recorded them in a table shown below.

Part of the magnet	Number of paper clips attracted to the part of the magnet
W	10
X	1
Y	9
Z	3

Based on Visa's results, label the parts by writing W, X, Y and Z in the boxes provided below. [2]

Match

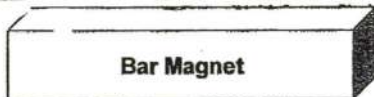
the options below:

Clue

Match



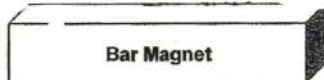
W



Points: +0.5 -0

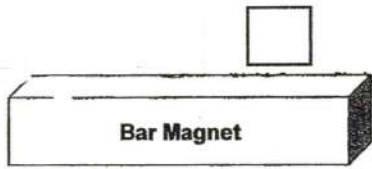


X

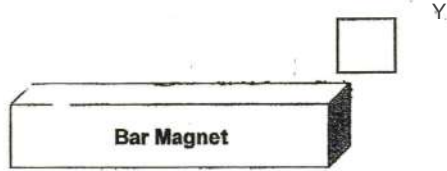


Points: +0.5 -0

Z



Points: +0.5 -0



Points: +0.5 -0

Question Type: Matching
Shuffle Mode: Shuffle Matches Only
Date Added: Tue 4th Aug 2020
Last Modified: N/A
QID#: 22,827,873

[Answers](#) | [Edit](#) | [Duplicate](#) | [Used In](#) | [Reorder](#)

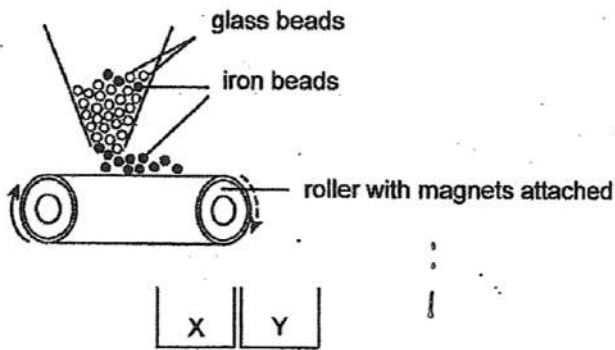
[Remove From Test](#)

Question 45

Primary 3 Science » Primary 3 Science (Term 4)

1 pt

A beads factory uses the machine below to separate iron beads from glass beads.



Which containers will the iron and glass beads fall into?

[1]

Clue	Match
iron	x
Points: +0.5 -0	
glass	y
Points: +0.5 -0	

Question Type: Matching
Shuffle Mode: Shuffle Matches Only
Date Added: Tue 4th Aug 2020
Last Modified: N/A
QID#: 22,827,890

[Answers](#) | [Edit](#) | [Duplicate](#) | [Used In](#) | [Reorder](#)

[Remove From Test](#)

Question 46

Primary 3 Science » Primary 3 Science (Term 4)

0 pts

After using the machine for many hours, the roller got very hot and the machine was unable to separate the beads into the two containers.

Give a reason why the machine did not work anymore.

[1]

Question Type: Essay
 Date Added: Tue 4th Aug 2020
 Last Modified: N/A
 QID#: 22,827,899

Correctly answered feedback

Heat cause the magnet to lost its magnetism.

Incorrectly answered feedback

Heat cause the magnet to lost its magnetism.

[Answers](#) | [Edit](#) | [Duplicate](#) | [Used In](#) | [Reorder](#)

[Remove From Test](#)

Question 47

Primary 3 Science » Primary 3 Science (Term 4)

2 pts



) To stay alive, the seedling needs food, _____ and

_____.

[2]

Accepted answers:

- ✓ air,water
- ✓ air, water
- ✓ air , water
- ✓ air and water
- ✓ water and air
- water, air

- ✓
- ✓ water , air
- ✓ water,air
- ✓ water air
- ✓ air water

Question Type: Free Text
Date Added: Tue 4th Aug 2020
Last Modified: N/A
QID#: 22,827,922

[↶ Answers](#) | [✎ Edit](#) | [📄 Duplicate](#) | [📌 Used In](#) | [⬇ Reorder](#)

[Remove From Test](#)

Question 48

Primary 3 Science » Primary 3 Science (Term 4)

1 pt

The seedling becomes taller and bigger after some time. This shows that it
can _____ [1]

Accepted answers:

- ✓ grow

Question Type: Free Text
Date Added: Tue 4th Aug 2020
Last Modified: N/A
QID#: 22,827,936

[↶ Answers](#) | [✎ Edit](#) | [📄 Duplicate](#) | [📌 Used In](#) | [⬇ Reorder](#)

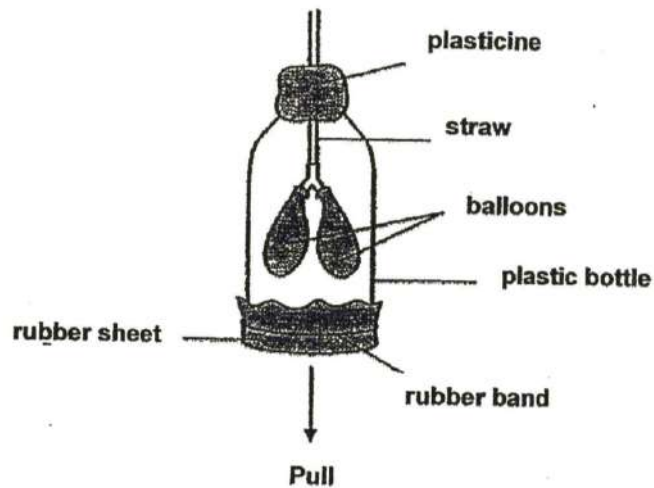
[Remove From Test](#)

Question 49

Primary 3 Science » Primary 3 Science (Term 4)

1 pt

Sophie was asked by her teacher to make a model of the human respiratory system.



Name the organs found in the system which are represented by the following objects in the model. [2]

straw:

Accepted answers:

✓ windpipe

Question Type: Free Text
 Date Added: Tue 4th Aug 2020
 Last Modified: N/A
 QID#: 22,827,954

[Answers](#) | [Edit](#) | [Duplicate](#) | [Used In](#) | [Reorder](#)

[Remove From Test](#)

Question 50

Primary 3 Science » Primary 3 Science (Term 4)

1 pt

balloons: _____

Accepted answers:

✓ lungs

Question Type: Free Text
 Date Added: Tue 4th Aug 2020
 Last Modified: N/A
 QID#: 22,827,958

[Answers](#) | [Edit](#) | [Duplicate](#) | [Used In](#) | [Reorder](#)

[Remove From Test](#)